

Installation Guide

Toilet Flush Plate - T - Series

Suits Models:

34401

Suits TECE Cisterns 9.300.503, 9.370.503, 9.300.356, 9.041.320

Important requirements:



Must be fitted in accordance with AS/NZS 3500 by qualified plumber



Mains 500kpa regulator must be fitted



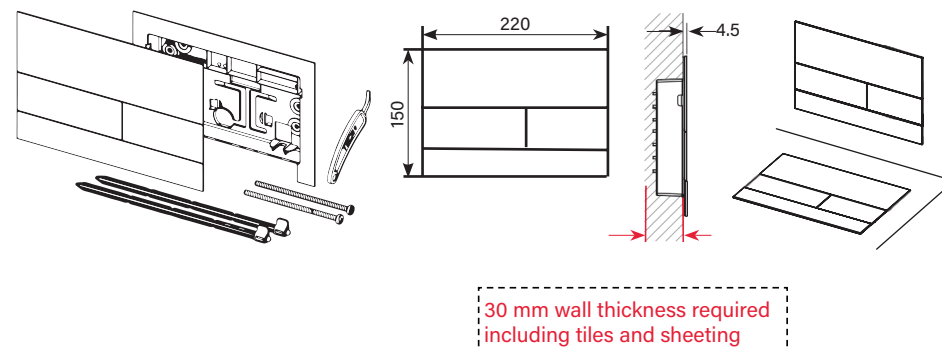
Water lines must be flushed prior to connection

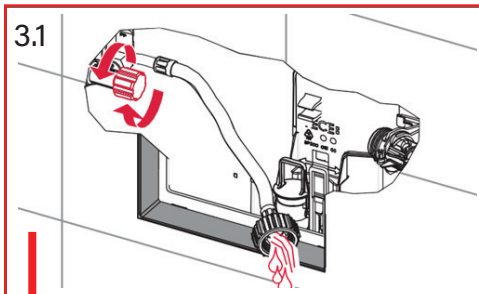
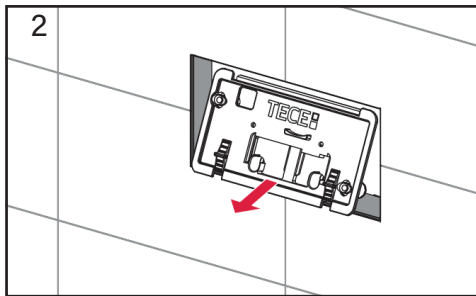
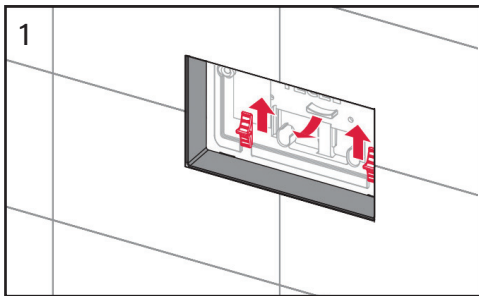


Only clean municipal water supply. No bore, dam or hard water without filtration & treatment

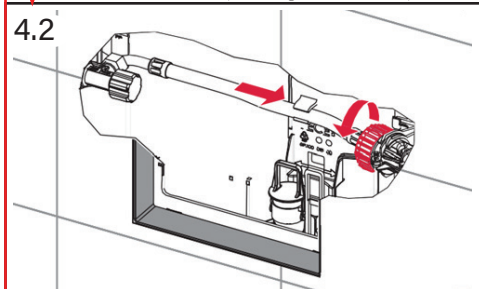
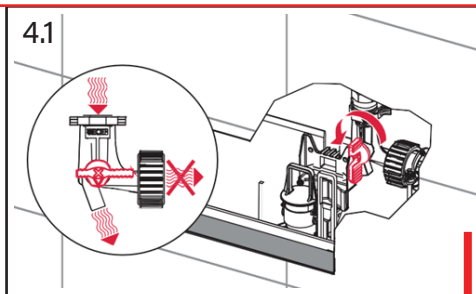
Cleaning

Clean only with a soft microfiber or similar cloth and warm clean water. Ensure that the cloth is clean and free of any grit or chemical. Dry fitting off with a soft clean cloth. Ensure that your fitting is not subject to any chemicals, building grit or any type of abrasive or polish. For care of special finishes please visit our website.

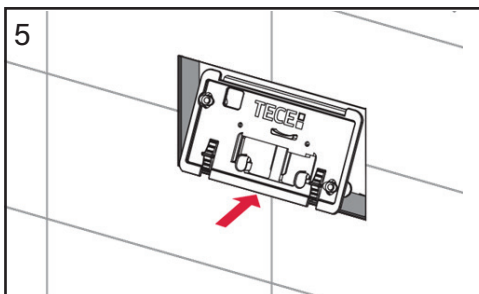
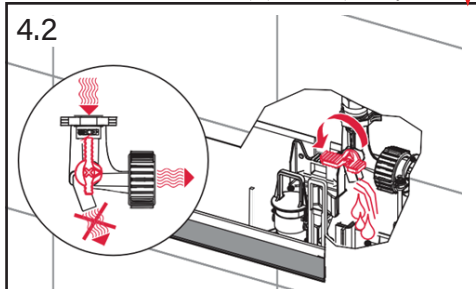




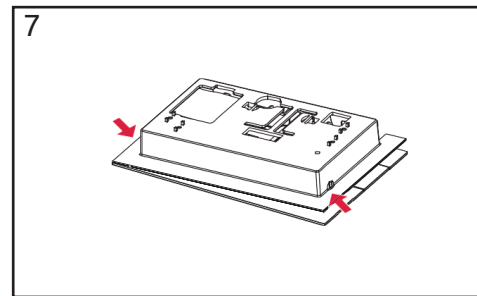
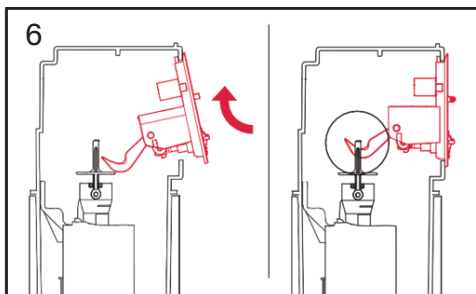
Remove the splash guard and open the corner valve. Flush out the pipe adequately.



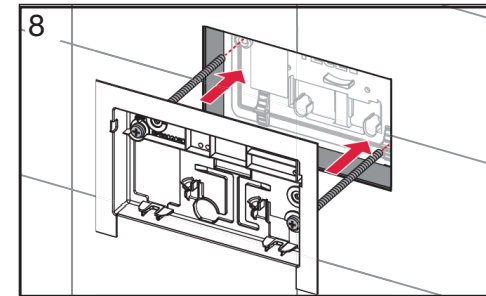
Close the corner valve again and connect the reinforced hose to the filling valve. If you wish to fill the cistern with water the corner valve must then be opened again.



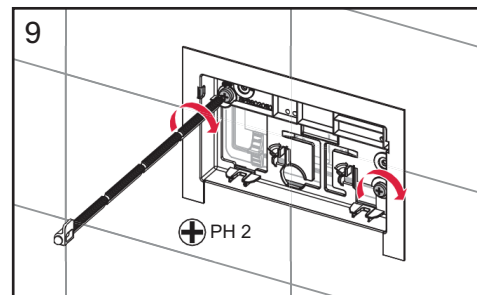
Replace the splash guard. The actuating hooks must be correctly seated in the towing eyes of the drain valve. Tighten the clamping screws of the splash guard.



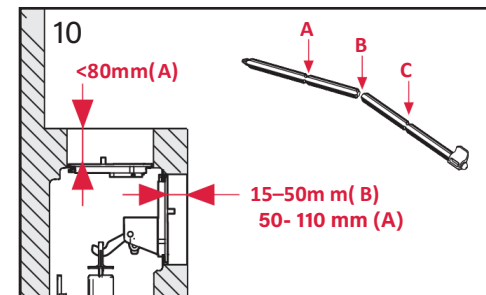
Grab only the mounting frame.



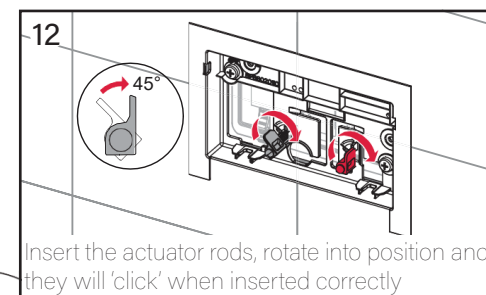
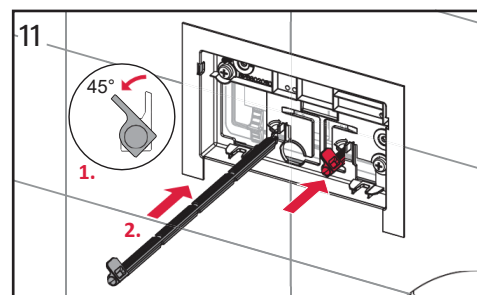
Secure the mounting frame using the fixings supplied.



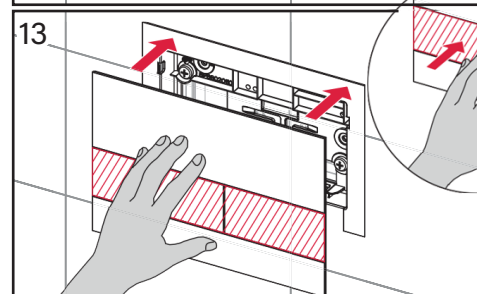
Screw in the fastening frame.



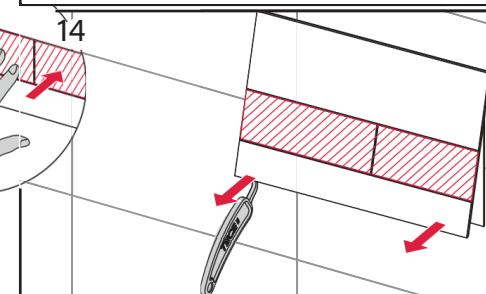
Break off the actuator rods to the required length.



Insert the actuator rods, rotate into position and they will 'click' when inserted correctly.



Insert the flush plate into the flush-mounted installation frame.



Use the lever supplied to remove the flush plate.